

BSP/METRIC

4

FLOW CONTROL VALVES & ACCESSORIES

Series GSCU-GMCU-GSVU GMVU-GSCO GMCO Right Angle Flow Control Valves - BSP/Metric

Swivel Design
Meter-in, Meter-Out, Needle Orifice
M5, G1/8 and G1/4
banjo flow controllers
Nominal diameters dia.
1.5 - 3.5 and 5 mm

These unidirectional and bidirectional flow controllers have been designed as small as possible to enable mounting directly on valves or cylinders.
The flow regulation range is wide and gradual, allowing the regulation to be very accurate either at minimum or maximum flow.

This chapter is a general overview of the Flow Control Valve product line. For details of product data and dimensions, please see the *Fittings and Flow Control Valves Catalog*.



TECHNICAL SPECIFICATIONS

Construction	needle-type, right angle swivel banjo design
Valve group	unidirectional and bidirectional controller (Meter-Out, Meter-In, Needle Orifice)
Materials	nickel-plated brass body threads - Buna-N seals, Nylon® gaskets
Mounting	by male thread
Ports	M5 - G1/8 - G1/4
Installation	in any position
Operating temperature	from 0 to 80°C (with dry air -20°C) (32°F - 175°F (with dry air -4°F))
Lubricant	compatible with Buna-N (3° — 10° E)

PNEUMATIC DATA

Operating pressure	1 — 10 bar (14.5 - 145 psi)
Nominal pressure	6 bar (87 psi)
Nominal flow	see graph
Nominal dia.	M5 ø1.5 mm (.059") G1/8 ø3.5 mm (.137") G1/4 ø5 mm (.196")
Fluid	filtered air

BSP/METRIC

4

FLOW CONTROL VALVES & ACCESSORIES

BSP/METRIC

Valves Series GSVU (Meter-In)

Unidirectional flow controller for mounting on valves and cylinders.
Screwdriver adjustment.
Ports: M5, G1/8, G1/4

Mod.

GSVU 813-M5-3

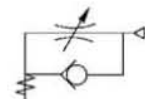
GSVU 814-M5-4

GSVU 803-1/8-6

GSVU 804-1/8-8

GSVU 805-1/4-8

GSVU 806-1/4-10



Valves Series GMVU (Meter-In)

Unidirectional flow controller for mounting on valves and cylinders.
Knurled screw adjustment.
Ports: M5, G1/8, G1/4

Mod.

GMVU 913-M5-3

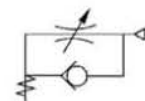
GMVU 914-M5-4

GMVU 903-1/8-6

GMVU 904-1/8-8

GMVU 905-1/4-8

GMVU 906-1/4-10



Valves Series GSCO (Needle Orifice)

Bidirectional flow controller.
Screwdriver adjustment.
Ports: M5, G1/8, G1/4

Mod.

GSCO 813-M5-3

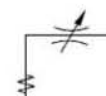
GSCO 814-M5-4

GSCO 803-1/8-6

GSCO 804-1/8-8

GSCO 805-1/4-8

GSCO 806-1/4-10



Valves Series GMCO (Needle Orifice)

Bidirectional flow controller.
 Knurled screw adjustment.
 Ports: M5, G1/8, G1/4

Mod.

GMCO 913-M5-3

GMCO 914-M5-4

GMCO 903-1/8-6

GMCO 904-1/8-8

GMCO 905-1/4-8

GMCO 906-1/4-10

