

BSP/METRIC

Series SCU, MCU, SVU, MVU, SCO, MCO Right Angle Flow Control Valves - BSP/Metric

Unidirectional and bidirectional
banjo flow controllers
Ports M5, G1/8, G1/4, G3/8, G1/2

These unidirectional and bidirectional flow controllers have been designed as small as possible so as to be mounted directly on valves or cylinders. The great variety of adjustable fittings makes it possible to complete the regulator with the most suitable system in relation to the available tube. Only the G1/2 model is supplied complete with banjo flow controllers. For the other models the banjo fitting is to be requested separately.

This chapter is a general overview of the Flow Control Valve product line. For details of product data and dimensions, please see the *Fittings and Flow Control Valves Catalog*.



TECHNICAL SPECIFICATIONS

Construction	needle type, right angle banjo assembly
Valve group	unidirectional and bidirectional controller
Materials	OTS8 nickel-plated brass body and threads - Buna-N seals, Nylon® gaskets.
Mounting	by male thread
Ports	M5 - G1/8 - G1/4 - G3/8 - G1/2
Installation	in any position
Operating temperature	from 0 to 80°C (with dry air -20°C) (32°F — 175°F (with dry air -4°F))
Lubricant	compatible with Buna-N (3° — 10° E)

PNEUMATIC DATA

Operating pressure	from 1 to 10 bar (14.5 - 145 psi)		
Nominal pressure	6 bar (87 psi)		
Nominal flow	see graph		
Nominal diameter	M5 = 1.5 mm (.059")	G1/8 = 2 mm (.078")	G1/4 = 4 mm (.157")
	G3/8 = 7 mm (.275")	G1/2 = 12 mm (.472")	
Fluid	filtered air		

CODING OF BANJO FLOW CONTROLLERS (STUD BODIES ONLY)

MCU 7 02-M5

ACTUATION

M = Manual
S = Screwdriver

ASSEMBLY

CU = on cylinders meter-out
VU = on valves meter-in
CO = needle orifice

VERSIONS

6 = needle (screwdriver operated)
7 = needle (manual operated)

FLOW CONTROL RANGE

02 = \varnothing 1.5 max
04 = \varnothing 2 max
06 = \varnothing 4 max
08 = \varnothing 7 max
10 = \varnothing 12 max

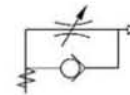
PORTS

M5
G1/8
G1/4
G3/8
G1/2

Valves Series SCU (Meter Out)

Unidirectional flow controller for mounting on single-acting or double-acting cylinders. Adjustment of setting by a screwdriver.
Ports: M5, G1/8, G1/4, G3/8.

Note: M5 flow controllers must be used together with M6 banjo fittings.
Note: Stud only, banjos ordered separately



Mod.

SCU 602-M5

SCU 604-1/8

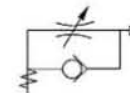
SCU 606-1/4

SCU 608-3/8

Valves Series MCU (Meter Out)

Unidirectional flow controller for mounting on valves and cylinders. Adjustment of setting by knurled screw.
Ports: M5, G1/8, G1/4.

Note: M5 flow controllers must be used together with M6 banjo fittings.
Note: Stud only, banjos ordered separately



Mod.

MCU 702-M5

MCU 704-1/8

MCU 706-1/4

MCU 708-3/8

BSP/METRIC

4

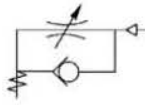
FLOW CONTROL VALVES & ACCESSORIES

BSP/METRIC

Valves Series SVU (Meter-In)

Unidirectional flow controller for mounting on valves and cylinders.
Adjustment of setting by a screwdriver.
Ports: M5, G1/8, G1/4.

Note: M5 flow controllers must be used together with M6 banjo fittings.



Mod.

SVU 602-M5

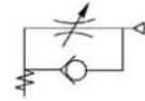
SVU 604-1/8

SVU 606-1/4

Valves Series MVU (Meter-In)

Unidirectional flow controller for mounting on valves and cylinders. Adjustment of setting by a manually operated knurled screw.
Ports: M5, G1/8, G1/4

Note: M5 flow controllers must be used together with M6 banjo fittings.
Note: Stud only, banjos ordered separately



Mod.

MVU 702 - M5

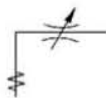
MVU 704 - 1/8

MVU 706 - 1/4

Valves Series SCO (Needle Orifice)

Bidirectional flow controller.
Adjustment of setting by a screwdriver.
Ports: M5, G1/8, G1/4

Note: M5 flow controllers must be used together with M6 banjo fittings.
Note: Stud only, banjos ordered separately



Mod.

SCO 602 - M5

SCO 604 - 1/8

SCO 606 - 1/4

Valves Series MCO (Needle Orifice)

Bidirectional flow controller.
Adjustment of setting by a knurled screw.
Ports: M5, G1/8, G1/4

Note: M5 flow controllers must be used together with M6 banjo fittings.
Note: Stud only, banjos ordered separately



Mod.

MCO 702 - M5

MCO 704 - 1/8

MCO 706 - 1/4

Valves Series SCU (Meter Out)

Unidirectional flow controller for mounting on single-acting or double-acting cylinders. Screwdriver adjustment.



Mod.

SCU 610-1/2



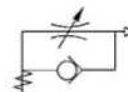
Valves Series MCU (Meter Out)

Unidirectional flow controller for mounting on single-acting or double-acting cylinders. Knurled screw adjustment.



Mod.

MCU 610-1/2



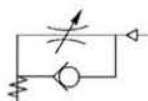
Valves Series SVU (Meter In)

Unidirectional flow controller for mounting on valves. Screwdriver adjustment.



Mod.

SVU 610-1/2



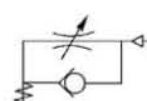
Valves Series MVU (Meter In)

Unidirectional flow controller for mounting on single-acting or double-acting cylinders. Knurled screw adjustment.



Mod.

MVU 710-1/2



BSP/METRIC

4 FLOW CONTROL VALVES & ACCESSORIES

Valves Series SCO (Needle Orifice)

Bidirectional flow controller.
Screwdriver adjustment.



Mod.

SCO 610-1/2



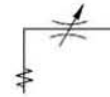
Valves Series MCO (Needle Orifice)

Bidirectional flow controller.
Knurled screw adjustment.



Mod.

MCO 710-1/2



Flow control valves with silencer Series RSW

Flow control valves with silencer.
Connections: G1/8, G1/4, G1/2

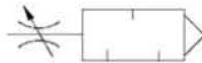


Mod.

RSW 1/8

RSW 1/4

RSW 1/2



Silencer bushing Series 2905

Silencer bushing for Mod. SCO... or MCO...
Assemble onto Stud Controller



Mod.

2905 1/8

2905 1/4

2905 3/8