



NPTF/INCH

4
FLOW CONTROL VALVES & ACCESSORIES

Series TMCU – TMVU – TMCO Composite Right Angle Flow Control Valves – NPTF/INCH

Meter In, Meter Out, Needle Orifice 1/8", 1/4", 3/8", 1/2" NPTF
 Tube OD 5/32", 1/4", 5/16", 3/8", 1/2"
 Reusable thread seal, PTFE seal ring (Teflon®) - **Pro-Fit®**

The Meter In, Meter Out, Needle Orifice flow controllers, series TMCU, TMVU, TMCO have been designed to offer a solution with reduced overall dimensions in combination with higher flow rate characteristics.

Their construction allows an easy assembly on cylinders and valves and offers the possibility of locking the regulation screw once it has been set.

The flow regulation range which is extremely wide and gradual has been optimized further, allowing a very accurate flow regulation over the whole scale.

This chapter is a general overview of the Flow Control Valve product line. For details of product data and dimensions, please see the *Fittings and Flow Control Valves Catalog*.



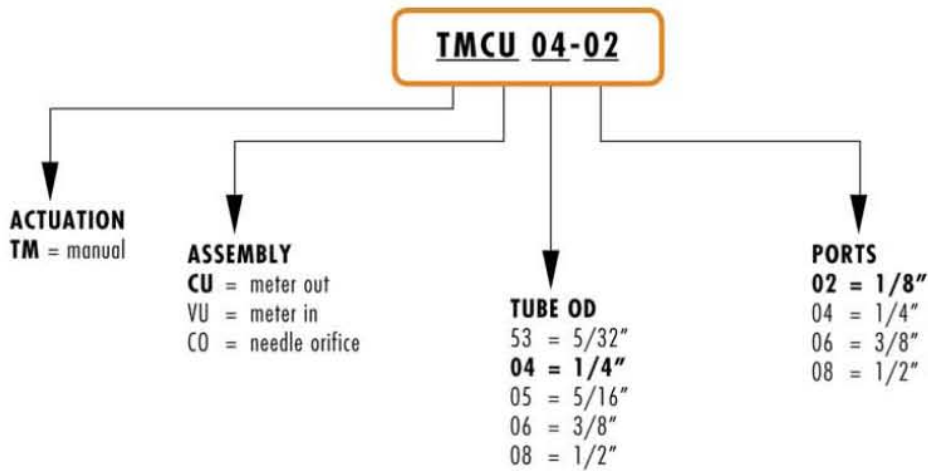
TECHNICAL SPECIFICATIONS

Construction	needle-type
Valve group	Meter In, Meter Out, Needle Orifice flow controller
Materials	OT58 Nickel Plated Brass Threads and Collet - Technopolymer (Glass-Reinforced Nylon® 66 Resin) - BUNA-N Seals, PTFE thread seal
Mounting	by male thread
Ports	1/8", 1/4", 3/8", 1/2" NPTF
Position	in any position
Operating temperature	0 - 60°C (with dry air -20°C) (32°F - 140°F, with dry air -4°F). Consult factory for higher temperature requirements.

*If lubricated air is used, it is recommended to use ISOVG32 oil. Once applied the lubrication should never be interrupted.

PNEUMATIC DATA

Operating pressure	0.5 - 10 bar (7.25 - 145 psi)
Nominal pressure	6 bar (87 psi)
Nominal flow	see graph
Nominal diam.	Tube OD 5/32", 1/4", 5/16", 3/8", 1/2"
Fluid	filtered air


CODING OF FLOW CONTROL VALVES

Meter-Out Valves Series TMCU

Right angle flow controller for mounting on cylinders and valves. Knurled screw adjustment, with internal hex slot.

Ports 1/8", 1/4", 3/8", 1/2" NPTF



Mod.

TMCU 53-02

TMCU 04-02

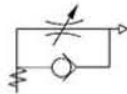
TMCU 04-04

TMCU 05-04

TMCU 05-06

TMCU 06-06

TMCU 06-08


Meter-In Valves Series TMVU

Meter-In Unidirectional flow controller for mounting on cylinders and valves. Knurled screw adjustment, with internal hex slot.

Ports 1/8", 1/4", 3/8", 1/2" NPTF



Mod.

TMVU 53-02

TMVU 04-02

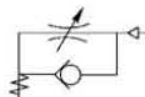
TMVU 04-04

TMVU 05-04

TMVU 05-06

TMVU 06-06

TMVU 06-08


Needle Orifice Valves Series TMCO

Needle Orifice Bi-directional flow controller for mounting on cylinders and valves. Knurled screw adjustment, with internal hex slot.

Ports 1/8", 1/4", 3/8", 1/2" NPTF



Mod.

TMCO 53-02

TMCO 04-02

TMCO 04-04

TMCO 05-04

TMCO 05-06

TMCO 06-06

TMCO 06-08

