



BSP/METRIC

4

FLOW CONTROL VALVES &amp; ACCESSORIES

BSP/METRIC

## Series TMCU-TMVU-TMCO

### Composite Right Angle Flow Control Valves

#### - BSP/Metric

Meter In, Meter Out, Needle Orifice G1/8, G1/4, G3/8, G1/2

Banjo flow controllers

Nominal diameters Ø 2 - 3.8 - 5.8 - 8 mm

The Meter In, Meter Out, Needle Orifice flow controllers, series TMCU, TMVU, TMCO have been designed to offer a solution with reduced overall dimensions in combination with higher flow rate characteristics.

Their construction allows an easy assembly on cylinders and valves and offers the possibility of locking the regulation screw once it has been set. The flow regulation range which is extremely wide and gradual has been optimized further, allowing a very accurate flow regulation over the whole scale.

This chapter is a general overview of the Flow Control Valve product line. For details of product data and dimensions, please see the *Fittings and Flow Control Valves Catalog*.

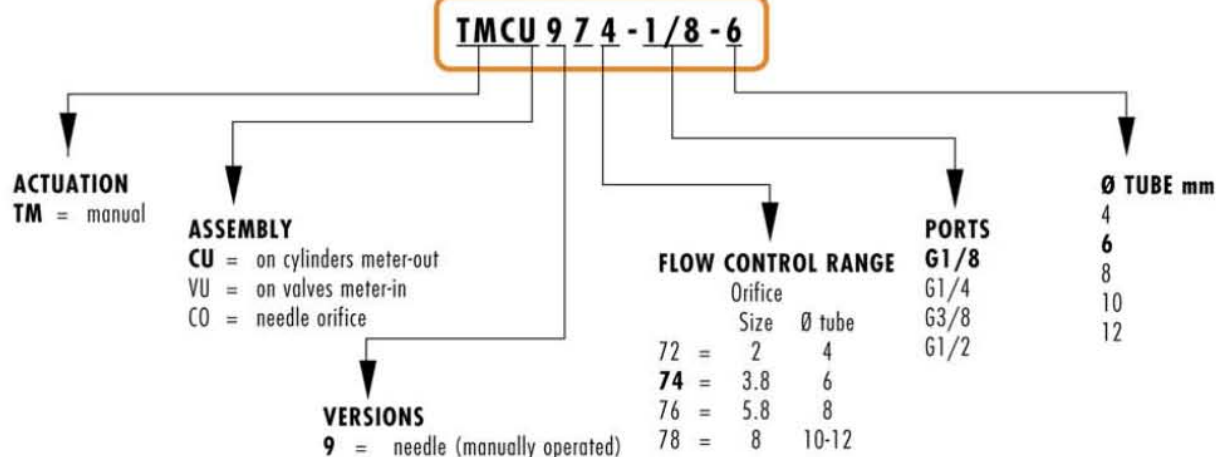


#### TECHNICAL SPECIFICATIONS

Construction	needle-type
Valve group	Meter In, Meter Out, Needle Orifice flow controller
Materials	OT58 Nickel-plated brass threads and collet - technopolymer (glass-reinforced Nylon® 66 resin) - NBR, BUNA-N seals
Mounting	by male thread
Ports	G1/8, G1/4, G3/8, G1/2
Installation	in any position (spot face o-ring thread seal)
Operating temperature	0 - 60°C (with dry air -20°C) (32°F - 140°F, with dry air -4°F)
*If lubricated air is used, it is recommended to use ISOVG32 oil. Once applied the lubrication should never be interrupted.	

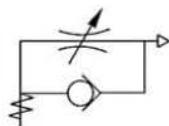
#### PNEUMATIC DATA

Operating pressure	0.5 - 10 bar (7.25 - 145 psi)
Nominal pressure	6 bar (87 psi)
Nominal flow	see graph
Nominal dia.	Tube 4 ø2 mm (.079") - Tube 6 ø3.8 mm (.150") - Tube 8 ø5.8 mm (.228") - Tube 10 and 12 ø8 mm (.315")
Fluid	filtered air


**CODING OF FLOW CONTROL VALVES**

**Valves Series TMCU (Meter out)**

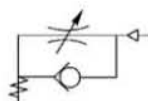
Right angle flow controller for mounting on single-acting and double-acting cylinders and valves. Knurled screw adjustment with internal hex slot.

Ports G1/8, G1/4, G3/8, G1/2


**Mod.**
**TMCU 972 1/8-4**
**TMCU 974 1/8-6**
**TMCU 974 1/4-6**
**TMCU 976 1/4-8**
**TMCU 976 3/8-8**
**TMCU 978 3/8-10**
**TMCU 978 1/2-10**

**Valves Series TMVU (Meter in)**

Unidirectional flow controller for mounting on single-acting and double-acting cylinders and valves. Knurled screw with internal hex slot.

Ports G1/8, G1/4, G3/8, G1/2


**Mod.**
**TMVU 972-1/8-4**
**TMVU 974-1/8-6**
**TMVU 974-1/4-6**
**TMVU 976-1/4-8**
**TMVU 976-3/8-8**
**TMVU 978-3/8-10**
**TMVU 978-1/2-10**

**Valves Series TMCO (Needle orifice)**

Bidirectional flow controller for mounting on single-acting and double-acting cylinders and valves. Knurled screw with internal hex slot.

Ports G1/8, G1/4, G3/8, G1/2


**Mod.**
**TMCO 972-1/8-4**
**TMCO 974-1/8-6**
**TMCO 974-1/4-6**
**TMCO 976-1/4-8**
**TMCO 976-3/8-8**
**TMCO 978-3/8-10**
**TMCO 978-1/2-10**
