

Series 9 - ISO 5599/1 Regulator Plate ISO Size 3 (AB-regulation) Size 3

For ISO Size 3 valves only.

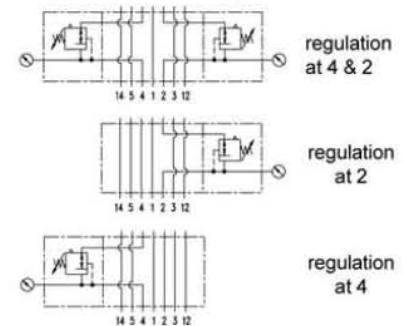
| Part Number | ISO.3 AB | ISO.3 A | ISO.3 B |
|-------------------|---|-----------------|-----------------|
| port size | regulation at 4 & 2 | regulation at 4 | regulation at 2 |
| | DIN ISO 5599/1 | | |
| description | air line regulator with diaphragm and relieving feature | | |
| mounting | arbitrary | | |
| supply pressure | Pe max. 16 bar (not to exceed max. pressure of valve) | | |
| reduced pressure | Pa 0.5-12 bar | | |
| media and ambient | | | |
| temperature | max. 50°C (other temperature ranges available upon request) | | |
| fixing | with connection board | | |
| weight | 3.200 kg (without gauge) | | |
| | | | |
| | | | |
| | | | |



Gauges supplied separately, shown only for installation

replacement parts * (repair kit: ESA-ISO.3)

| no | description | material | order-no. |
|----|-----------------------------|------------------|---------------|
| 1 | intermediate plate | Al | --- |
| 2 | sealing frame ISO.3-5 | NBR | 5.1833.05.000 |
| 3 | body | Al | --- |
| 4 | spring cage C.33-72 | POM - Ms | 8.2133.72.000 |
| 5 | diaphragm | NBR - Ms | * |
| 6 | regulating spring 0-12 bar | St. - galvanized | 5.2133.08.000 |
| 7 | valve cone | NBR - Ms | * |
| 8 | spring C.33-22 | niro | 5.2133.22.000 |
| 9 | sealing frame | NBR | * |
| 10 | spring cage lockable C.33-K | POM - Al | 8.2133.72.001 |
| 11 | lock cylinder C.33-52 | Ms | 5.2133.52.000 |



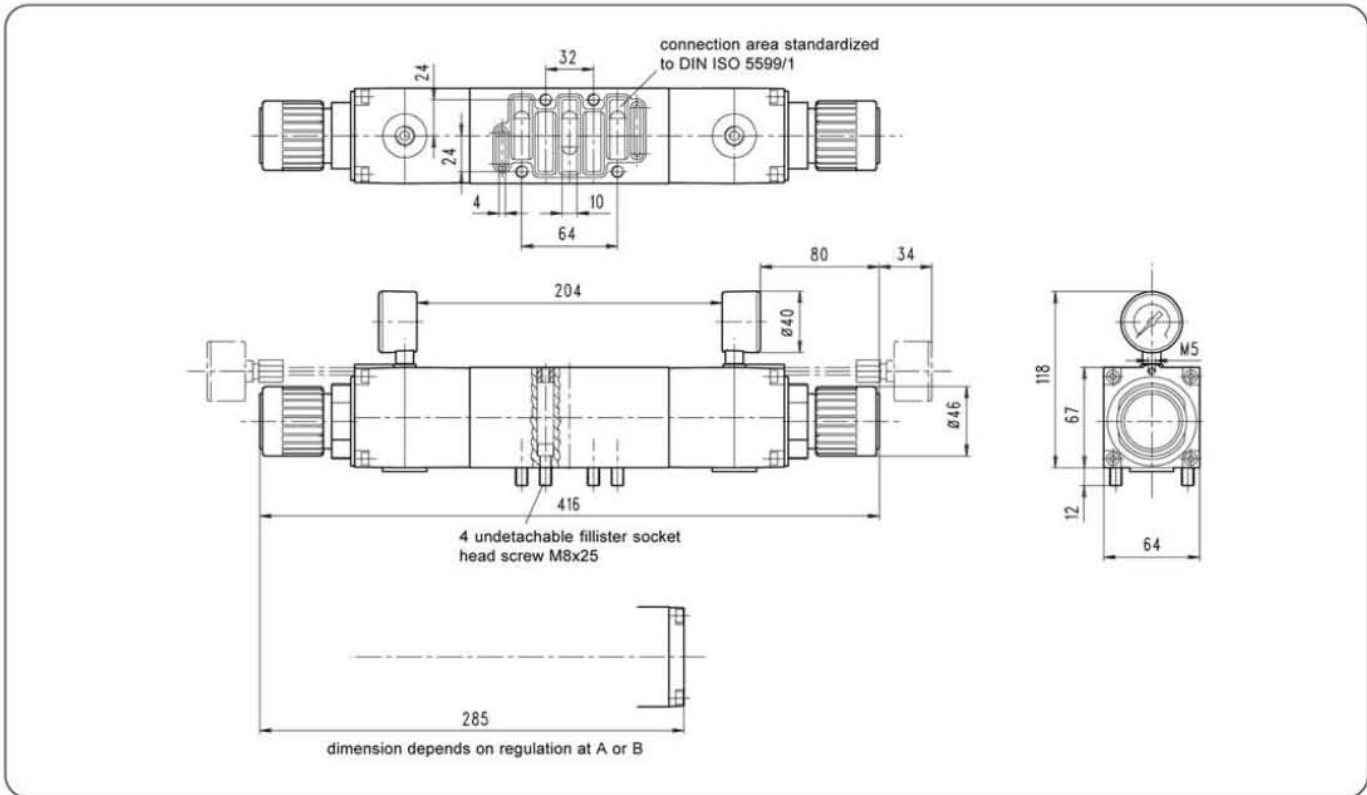
| ordering information | Key |
|--|--------------|
| ISO.3 AB | AB |
| ISO.3 A (4) | A (4) |
| ISO.3 B (2) | B (2) |
| type <input type="text"/> | |
| <input type="text" value="1"/> port side | |

ordering example: ISO.3 AB

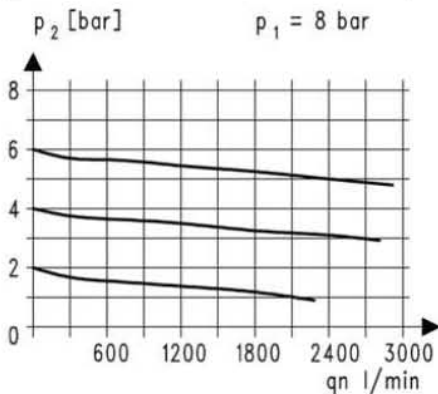
application information

- adjusting knob can be locked by depressing

Dimensions (mm)



flow characteristics



accessories

adaptor for gauge with rear connection



Mod.: ISO.3-12