

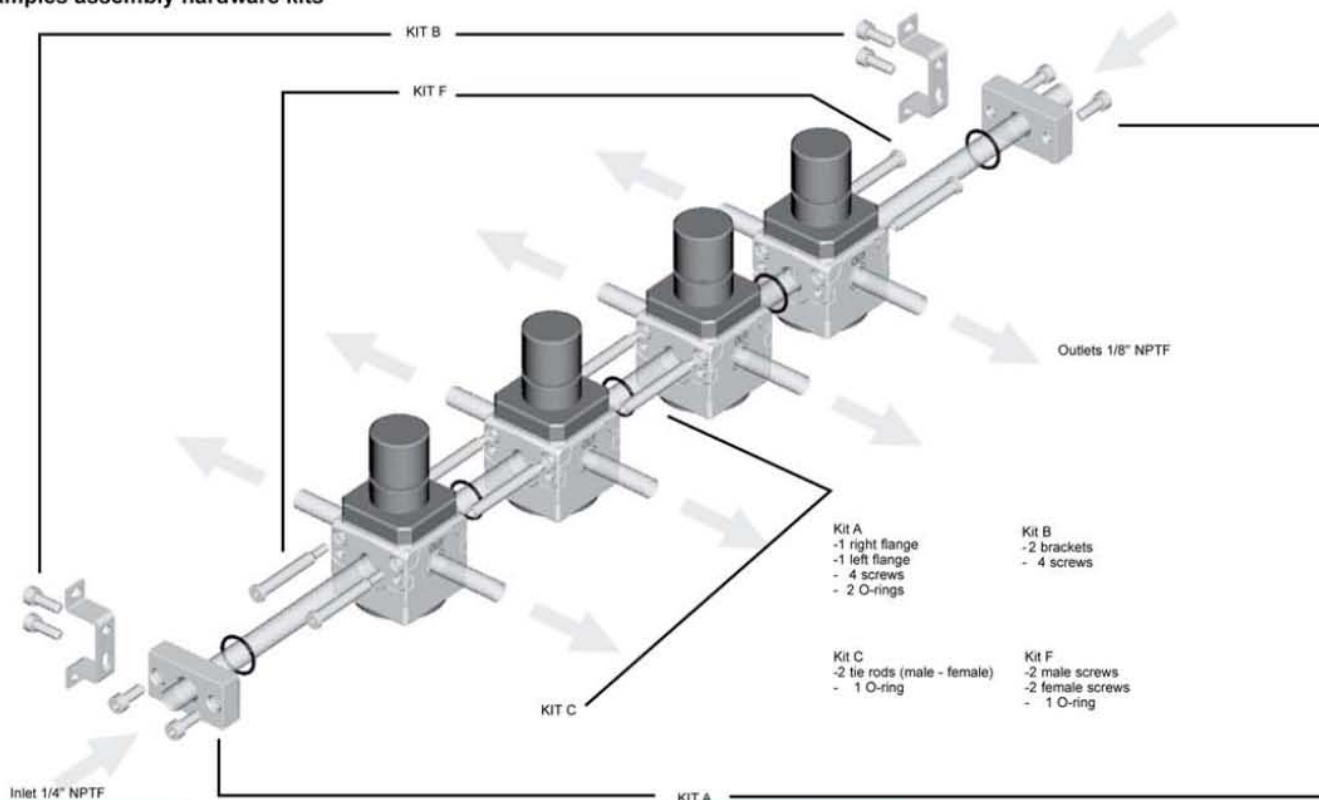


NORTH AMERICAN FRL CATALOG &gt; Release 8.2

2

# Manifold Regulators Series MC Assembly Hardware Kits (1/4" only — MC1)

Examples assembly hardware kits



Inlet 1/4" NPTF

KIT A

**Assembly without end plates**


Body	Kit
H + H	1 Kit "F"
H + H + H	1 Kit "F" + 1 Kit "C"
H + H + H + H	1 Kit "F" + 2 Kit "C"
H + H + H + H + H	1 Kit "F" + 3 Kit "C"

**Assembly with end plates**


Body	Kit
H + H	1 Kit "A" + 1 Kit "F"
H + H + H	1 Kit "A" + 1 Kit "F" + 1 Kit "C"
H + H + H + H	1 Kit "A" + 1 Kit "F" + 2 Kit "C"
H + H + H + H + H	1 Kit "A" + 1 Kit "F" + 3 Kit "C"

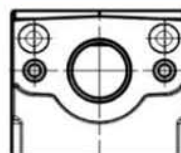
## Types Kit

N.B. for configurations which differ from the ones described, you can only add only bodies type "H" and for every part added you should add a Kit "C".

### Components & Part number

Kit A: MC104-FL-TF	1 right flange + 1 left flange + 4 screws + 1 O-ring
	2 brackets + 4 screws
Kit C: MC1-TMF	2 tie rods male - female + 1 O-ring
Kit F: MC1-VMF	2 male screws + 2 female screws + 1 O-ring

## Example body "Manifold" regulator type H



With through holes on top (used to mount the manifold regulators to each other)  
 With female no through threads  
 - manifold regulator

N.B. Once a group of manifold regulators has been assembled, it can be inserted in a FRL group. In this case the manifold regulator assembly alone would be defined as body type M (see page 76)