

Basic Logic Valves Series 2L Cv = .094 BSP/METRIC

Cartridge Ø 4 mm
[5/32" O.D. tube connection]

These basic pneumatic logic valves provide a range of functions including "AND", "NOT", "OR", "YES" and "Memory".

Materials:

- Aluminium Body
- Buna-N Seals
- OT58 Nickel-Plated Brass Collet



TECHNICAL SPECIFICATIONS

Construction	Poppet [spool for Memory]
Valve group	Automatic valves [logic units]
Ports	Cartridge ø4 mm [5/32" O.D. tube connection]
Operating pressure	32° - 175° F, [dry air necessary down to -4° F]
Lubricant	Oil compatible with Buna-N seals
Fluid	Air, with or without lubrication

PNEUMATIC DATA

Operating pressure	29 - 116 psi
Nominal flowrate	90 NL/min. [3.18 SCFM], Cv = .094

Dimensions in millimeters



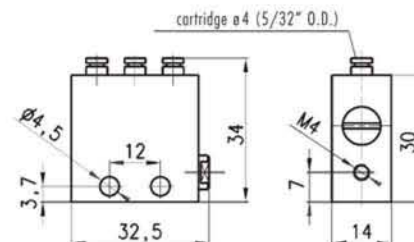
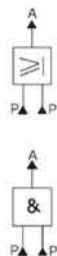
BSP/METRIC

8

LOGIC VALVES

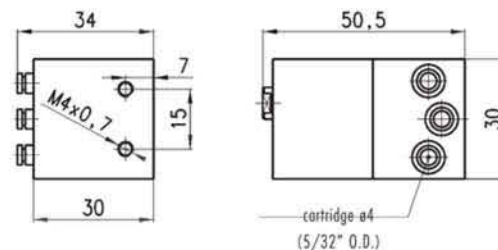
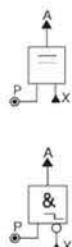
"or", "and" valve Mod. 2LR.../2LD...

Mod.	
2LR-SB4-B	(OR)
Mod.	
2LD-SB4-B	(AND)



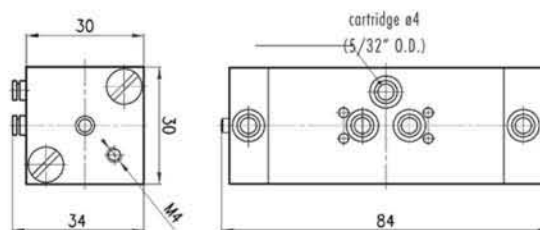
"yes", "not" valve Mod. 2LS.../2LT...

Mod.	
2LS-SB4-B	(YES)
Mod.	
2LT-SB4-B	(NOT)



"Memory" valve Mod. 2LM...

Mod.	
2LM-SB4-B	



Right-angled bracket Mod. 2LQ...

Mod.	
2LQ-BA	

